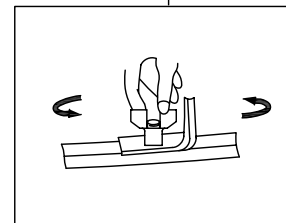
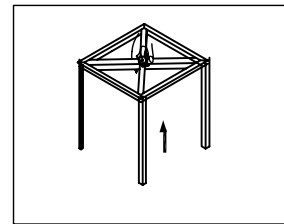


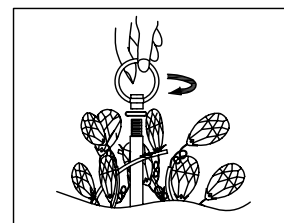
Step.1



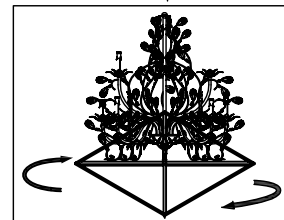
Step.2



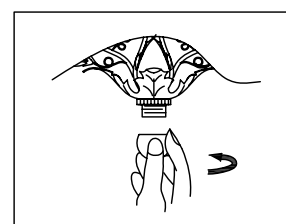
Step.3



Step.4



Step.5



Step.6

Step 1

Cut the rope (1) and remove them.

Step 2

Unscrew the butterfly nuts (2).

Step 3

Remove the fastening frame (3).

Step 4

Put the ring in the tube, then screw in the loop (4) until it's tighten.

Step 5

Lift the lamp and unscrew the base fastening frame (5) and remove it.

Step 6

Screw the ball nut until it's fully tighten.

The lamp is now ready for installation.

For installing the lamp please refer to the installation sheet for details.